

Case Study

BI Managed Services For A Global Food Manufacturer

Industry

Manufacturing – Consumer Goods

Location

United States

Revenues

4 Billion USD

Function

Sales, IT Operations

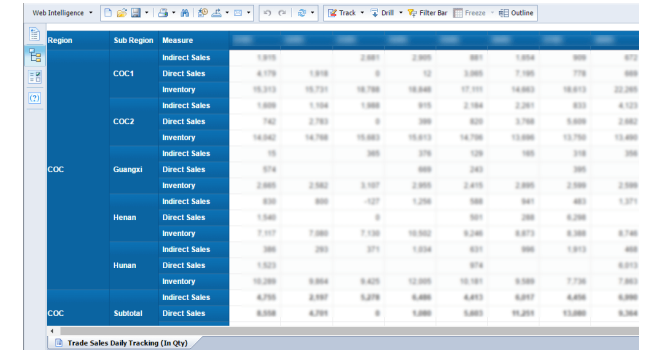
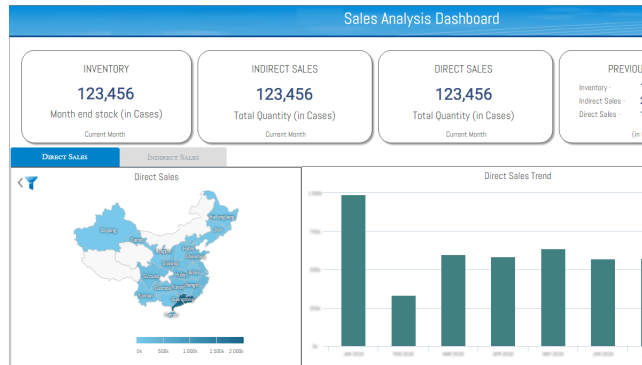
Challenges

- Customer needed a capable partner who could not only execute, but also provide BI thought leadership to ensure long-term ROI
- Manage IT operations costs effectively
- Deliver streamlined global support & maintenance

Solutions & Technology

- BI Strategy
- BI Managed Services
- Support & Maintenance
- SAP Business Warehouse
- SAP BusinessObjects
- BO Data Services (BODS)
- BO Administration
- Reports - Web Intelligence & Analysis For Office
- SAP Predictive Analytics
- SAP HANA

Worked as a virtual extension of customer's BI team and led multiple initiatives



The screenshot shows a detailed data table with columns for Region, Sub-Region, and Measure. The table lists sales data for various regions including COC1, COC2, Guangxi, Henan, and Hunan, with measures for Indirect Sales, Direct Sales, and Inventory.

- Support & Maintenance: Assisted global business operations by delivering support, maintenance, monitoring, upgrade testing, performance tuning, troubleshooting & enhancements to BI landscape (including SAP BW & SAP BO)
- SAP BusinessObjects Admin: Managed BO installation, upgrades, user admin, repository admin, cloud/AWS integration, Universe retirement, troubleshooting and more
- SAP BusinessObjects: UNV to UNX conversion, Universe enhancements, performance tuning for user-created reports
- Reporting: Delivered ad-hoc reports using Web Intelligence and Analysis for Office (AO)
- Analysis for Office (AO): New AO application development, BEX to AO conversion, advanced AO support to users
- Web Intelligence (WebI): New reports development, support existing reports, BOBJ audit customization
- Self Service BI using SAP Lumira: New reports development, support, upgrade testing, SharePoint integration, performance tuning
- Reengineered ETL landscape from IBM DataStage to SAP BODS
- Executed Proof Of Concepts on areas such as SAS to SAP Predictive Analytics, and SAP HANA Live