

Xcelsius to SAP Design Studio Migration Using Visual BI Extensions (VBX)

Industry

Healthcare

Location

United States

Function

Sales & Operations

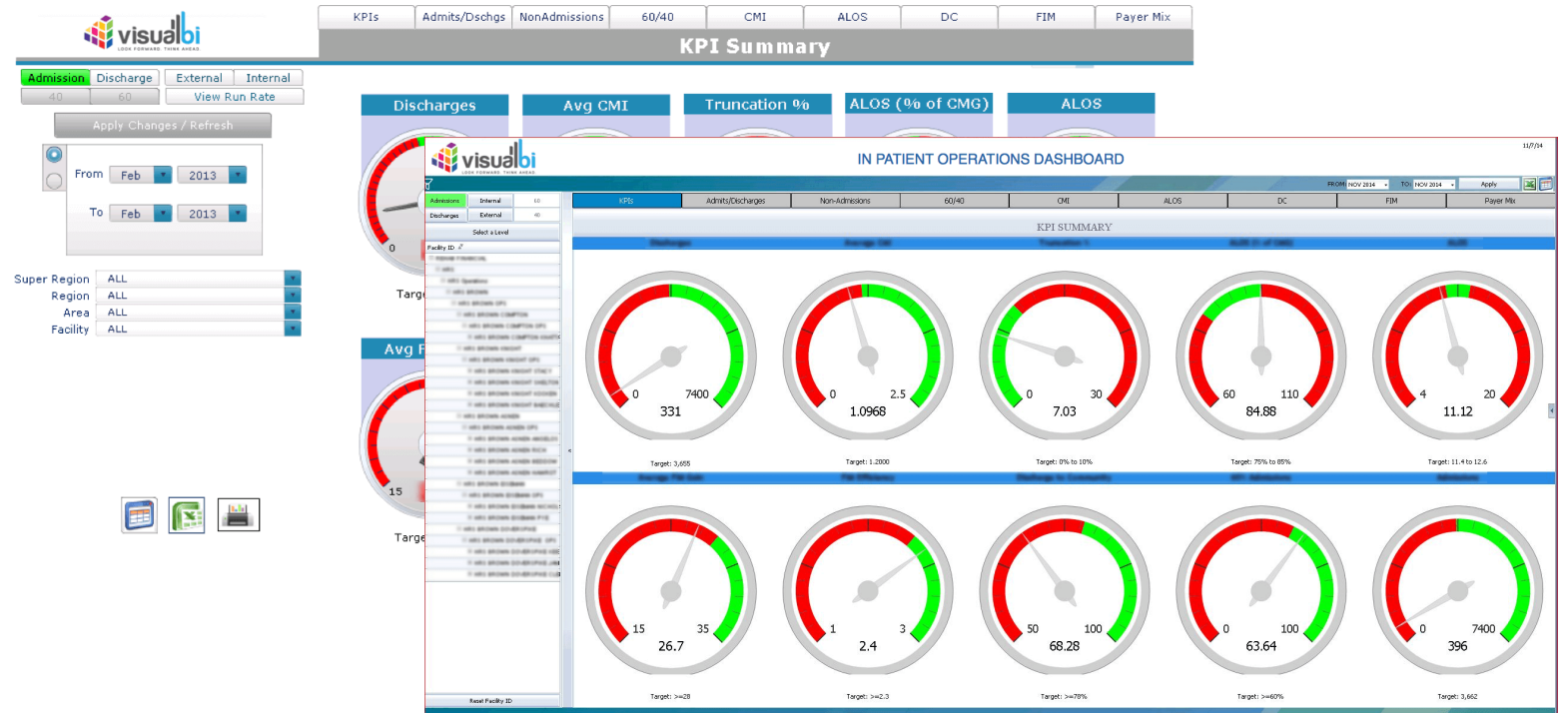
Challenges

- Xcelsius dashboard delivering 17+ Healthcare Operations KPI's suffered from sub-optimal performance due to architectural & tool limitations
- The driver for migration was SAP Design Studio's query-retrieval-on-demand capability and features delivered by Product Extensions (VBX)

Technology

- SAP BW 7.x
- SAP BusinessObjects 4.x

- Migrated Healthcare Operations Dashboard that helped executives monitor and manage 17+ KPIs
- Reduced initial load times from 30+ seconds to 10+ seconds, a 3x improvement in performance
- Leveraged VBX product extensions for components that were used in Xcelsius but not yet available in SAP Design Studio - such as gauges - which helped retain familiarity for casual BI users



"Visual BI provided us with a unique skill and the time that we didn't have on staff in creating several critical dashboards. They are able to develop dashboard prototypes rapidly and are able to quickly build functionality around a basic concept"

- Director of Financial Systems/Data Warehouse